

# Macalloy Tension Structures

## Technical Data

| Product Name  | Material        | Characteristic Yield Stress N/mm <sup>2</sup> | Ultimate Tensile Stress N/mm <sup>2</sup> | Min. Elongation % | Min. Charpy Impact J@-20°C |
|---------------|-----------------|---|---|-------------------|----------------------------|
| Macalloy 460  | Carbon Steel    | 460   | 610                                       | 19                | 27                         |
| Macalloy S460 | Stainless Steel | 460   | 610                                       | 15                | 27                         |
| Macalloy 520  | Carbon Steel    | 520   | 660                                       | 19                | 27                         |
| Macalloy S520 | Stainless Steel | 520   | 660                                       | 15                | 27                         |
| Macalloy 550  | Carbon Steel    | 550   | 700                                       | 19                | 27                         |
| Macalloy S550 | Stainless Steel | 550   | 700                                       | 15                | 27                         |

| MAXIMUM LENGTH OF INDIVIDUAL BAR |                              |        |            |
|----------------------------------|------------------------------|--------|------------|
| DIAMETER                         | STAINLESS STEEL              | CARBON | GALVANISED |
| M10 – M12                        | 6.0m                         | 8.5m   | 6.0m       |
| M16 – M30                        | 6.0m                         | 11.8m  | 11.8m      |
| M36 – M100                       | 6.0m                         | 11.8m  | 11.8m      |
| M105 – M120                      | CONTACT MACALLOY FOR DETAILS |        |            |

| TENDON CAPACITIES FOR CARBON AND STAINLESS 460 |     |     |      |     |      |     |      |     |      |      |      |      |      |      |      |      |      |      |      |      |      |
|--|-----|-----|------|-----|------|-----|------|-----|------|------|------|------|------|------|------|------|------|------|------|------|------|
| THREAD   | M10 | M12 | M16  | M20 | M24  | M30 | M36  | M42 | M48  | M56  | M64  | M70  | M76  | M80  | M85  | M90  | M95  | M100 | M105 | M110 | M120 |
| Nominal Bar Dia. (mm)                          | 10  | 11  | 15.5 | 20  | 22.5 | 29  | 34.5 | 40  | 45   | 52   | 60   | 67   | 73   | 78   | 83   | 90   | 93   | 98   | 105  | 110  | 120  |
| Design Resistance to EC3 NR,d (kN)             | 24  | 35  | 66   | 103 | 149  | 238 | 348  | 479 | 630  | 871  | 1149 | 1401 | 1677 | 1875 | 2138 | 2418 | 2714 | 3029 | 3360 | 3709 | 4459 |
| Min. Yield Load (kN)                           | 25  | 37  | 69   | 108 | 156  | 249 | 364  | 501 | 660  | 912  | 1204 | 1467 | 1756 | 1964 | 2239 | 2533 | 2843 | 3172 | 3520 | 3885 | 4671 |
| Min. Break Load (kN)                           | 33  | 48  | 91   | 143 | 207  | 330 | 483  | 665 | 875  | 1209 | 1596 | 1946 | 2329 | 2604 | 2969 | 3358 | 3769 | 4206 | 4667 | 5152 | 6194 |
| Nominal Bar Weight (kg/m)                      | 0.6 | 0.8 | 1.5  | 2.5 | 3.1  | 5.2 | 7.3  | 9.9 | 12.5 | 16.7 | 22.2 | 27.7 | 32.9 | 37.5 | 42.5 | 49.9 | 53.3 | 59.2 | 68.0 | 74.6 | 88.8 |

TABLE 4

## TENDON CAPACITIES FOR CARBON AND STAINLESS 520

| THREAD                             | M10 | M12 | M16  | M20 | M24  | M30 | M36  | M42 | M48  | M56  | M64  | M70  | M76  | M80  | M85  | M90  | M95  | M100 | M105 | M110 | M120 |
|------------------------------------|-----|-----|------|-----|------|-----|------|-----|------|------|------|------|------|------|------|------|------|------|------|------|------|
| Nominal Bar Dia. (mm)              | 10  | 11  | 15.5 | 20  | 22.5 | 29  | 34.5 | 40  | 45   | 52   | 60   | 67   | 73   | 78   | 83   | 90   | 93   | 98   | 105  | 110  | 120  |
| Design Resistance to EC3 NR,d (kN) | 26  | 38  | 71   | 112 | 161  | 257 | 376  | 518 | 682  | 942  | 1244 | 1516 | 1814 | 2029 | 2313 | 2616 | 2936 | 3277 | 3636 | 4014 | 4825 |
| Min. Yield Load (kN)               | 28  | 41  | 78   | 122 | 176  | 282 | 412  | 567 | 746  | 1031 | 1361 | 1659 | 1986 | 2220 | 2531 | 2863 | 3213 | 3586 | 3979 | 4392 | 5280 |
| Min. Break Load (kN)               | 36  | 52  | 98   | 155 | 223  | 357 | 523  | 719 | 947  | 1308 | 1727 | 2105 | 2520 | 2817 | 3213 | 3634 | 4078 | 4551 | 5050 | 5574 | 6701 |
| Nominal Bar Weight (kg/m)          | 0.6 | 0.8 | 1.5  | 2.5 | 3.1  | 5.2 | 7.3  | 9.9 | 12.5 | 16.7 | 22.2 | 27.7 | 32.9 | 37.5 | 42.5 | 49.9 | 53.3 | 59.2 | 68.0 | 74.6 | 88.8 |

TABLE 5

## TENDON CAPACITIES FOR CARBON AND STAINLESS 550

| THREAD                             | M10 | M12 | M16  | M20 | M24  | M30 | M36  | M42 | M48  | M56  | M64  | M70  | M76  | M80  | M85  | M90  | M95  | M100 | M105 | M110 | M120 |
|------------------------------------|-----|-----|------|-----|------|-----|------|-----|------|------|------|------|------|------|------|------|------|------|------|------|------|
| Nominal Bar Dia. (mm)              | 10  | 11  | 15.5 | 20  | 22.5 | 29  | 34.5 | 40  | 45   | 52   | 60   | 67   | 73   | 78   | 83   | 90   | 93   | 98   | 105  | 110  | 120  |
| Design Resistance to EC3 NR,d (kN) | 27  | 40  | 75   | 119 | 171  | 273 | 399  | 549 | 723  | 999  | 1319 | 1608 | 1924 | 2152 | 2453 | 2775 | 3114 | 3475 | 3856 | 4257 | 5117 |
| Min. Yield Load (kN)               | 30  | 44  | 82   | 129 | 186  | 298 | 435  | 599 | 789  | 1090 | 1439 | 1754 | 2100 | 2348 | 2677 | 3028 | 3399 | 3792 | 4208 | 4645 | 5584 |
| Min. Break Load (kN)               | 38  | 56  | 104  | 165 | 237  | 379 | 554  | 763 | 1004 | 1387 | 1832 | 2233 | 2673 | 2988 | 3407 | 3854 | 4325 | 4827 | 5356 | 5912 | 7107 |
| Nominal Bar Weight (kg/m)          | 0.6 | 0.8 | 1.5  | 2.5 | 3.1  | 5.2 | 7.3  | 9.9 | 12.5 | 16.7 | 22.2 | 27.7 | 32.9 | 37.5 | 42.5 | 49.9 | 53.3 | 59.2 | 68.0 | 74.6 | 88.8 |

TABLE 6

## CAPACITY AND LENGTHS OF ARCHITECTURAL AND STANDARD COMPRESSION STRUTS

| System Ref.                       | M12  | M16  | M20  | M24  | M30  | M36  | M42   | M48   | M56                           | M64   | M76   | M85   | M90   | M100  |
|-----------------------------------|------|------|------|------|------|------|-------|-------|-------------------------------|-------|-------|-------|-------|-------|
| Maximum Compressive Capacity (kN) | 14   | 28   | 45   | 69   | 122  | 190  | 274   | 370   | 530                           | 729   | 1064  | 1395  | 1589  | 2031  |
| Maximum Pin To Pin Length (mm)    | 2369 | 2663 | 2671 | 3105 | 3357 | 3367 | 4498  | 6397  | 7097                          | 7420  | 8188  | 9323  | 10291 | 11679 |
| Carbon CHS O.D. (mm)              | 33.7 | 42.4 | 48.3 | 60.3 | 76.1 | 88.9 | 114.3 | 139.7 | 168.3                         | 193.7 | 219.1 | 244.5 | 273   | 323.9 |
| Carbon CHS Wall Thickness (mm)    | 4    | 5    | 5    | 5    | 5    | 5    | 6.3   | 10    | 10                            | 10    | 12.5  | 16    | 16    | 16    |
| Stainless CHS O.D. (mm)           | 33.4 | 42.4 | 48.3 | 60.3 | 73.0 | 88.9 | 114.3 | 141.3 | CONTACT TECHNICAL FOR DETAILS |       |       |       |       |       |
| Stainless CHS Wall Thickness (mm) | 4.5  | 5.0  | 5.0  | 5.0  | 5.2  | 5.5  | 6.0   | 9.5   | CONTACT TECHNICAL FOR DETAILS |       |       |       |       |       |

## CONNECTION DISC

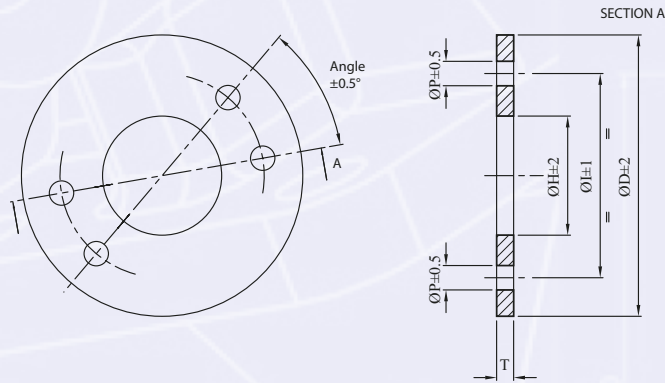


TABLE 7

|    | D/10 | D/12 | D/16 | D/20 | D/24 | D/30 | D/36 | D/42 | D/48 | D/56 | D/64 | D/76 |
|----|------|------|------|------|------|------|------|------|------|------|------|------|
| ØI | 96   | 120  | 160  | 180  | 210  | 280  | 320  | 360  | 410  | 500  | 560  | 700  |
| ØP | 11.5 | 13   | 17   | 21.5 | 25.5 | 31.5 | 37.5 | 43.5 | 49.5 | 57.5 | 65.5 | 78.5 |
| T  | 10   | 10   | 12   | 15   | 20   | 22   | 30   | 35   | 40   | 45   | 55   | 70   |
| ØD | 130  | 164  | 218  | 249  | 294  | 386  | 444  | 502  | 572  | 694  | 782  | 964  |
| ØH | 50   | 70   | 90   | 105  | 115  | 160  | 185  | 205  | 235  | 290  | 330  | 400  |

CONTACT MACALLOY FOR DETAILS FOR ADDITIONAL SIZES

## CROSS COUPLER

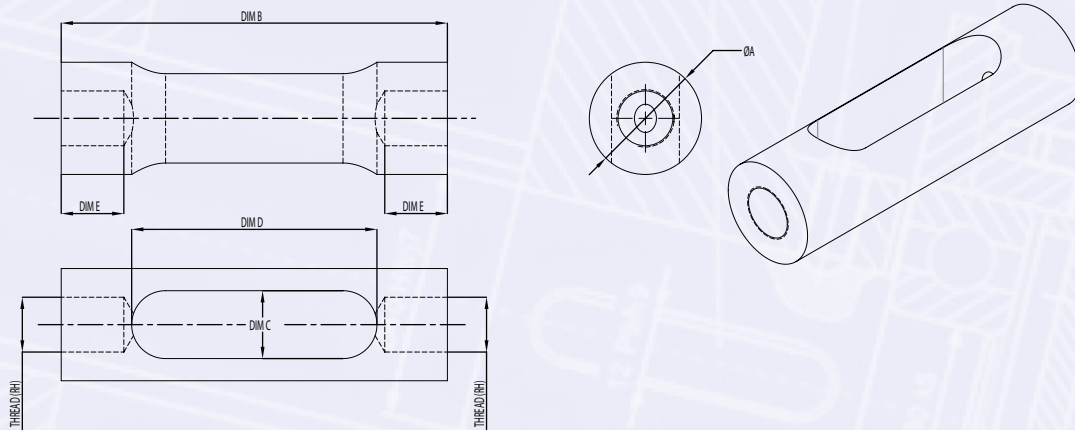


TABLE 8

| THREAD  | M10 | M12 | M16 | M20 | M24 | M30 | M36 | M42 | M48 | M56 | M64 | M70 | M76 | M80 | M85 | M90 | M95 | M100 | M105 | M110 | M120 |
|---------|-----|-----|-----|-----|-----|-----|-----|-----|-----|-----|-----|-----|-----|-----|-----|-----|-----|------|------|------|------|
| ØA (mm) | 19  | 25  | 29  | 35  | 43  | 52  | 62  | 72  | 82  | 96  | 110 | 120 | 134 | 140 | 148 | 158 | 165 | 172  | 184  | 190  | 208  |
| B (mm)  | 73  | 82  | 105 | 128 | 148 | 183 | 217 | 249 | 283 | 328 | 376 | 408 | 462 | 481 | 509 | 556 | 561 | 582  | 620  | 645  | 704  |
| C (mm)  | 12  | 14  | 18  | 22  | 26  | 32  | 38  | 44  | 50  | 58  | 66  | 72  | 78  | 82  | 87  | 92  | 97  | 102  | 107  | 112  | 122  |
| D (mm)  | 47  | 52  | 67  | 82  | 94  | 117 | 139 | 159 | 181 | 210 | 242 | 262 | 300 | 315 | 323 | 346 | 365 | 376  | 404  | 419  | 458  |
| E (mm)  | 10  | 12  | 16  | 20  | 24  | 30  | 36  | 42  | 48  | 56  | 64  | 70  | 76  | 80  | 85  | 90  | 95  | 100  | 105  | 110  | 120  |

## TURNBUCKLE WITH FIN PLATE

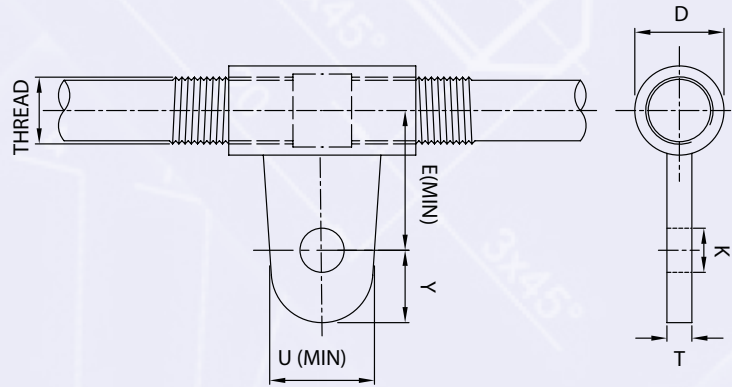


TABLE 9

| THREAD | M10  | M12 | M16 | M20  | M24  | M30  | M36  | M42  | M48  | M56  | M64  | M70  | M76  | M80  | M85  | M90  | M95   | M100  |
|--------|------|-----|-----|------|------|------|------|------|------|------|------|------|------|------|------|------|-------|-------|
| Y (mm) | 19   | 22  | 30  | 37   | 43   | 56   | 64   | 74   | 84   | 101  | 112  | 120  | 132  | 148  | 160  | 166  | 181   | 196   |
| U (mm) | 28   | 34  | 48  | 60   | 68   | 90   | 103  | 118  | 135  | 163  | 180  | 192  | 211  | 237  | 259  | 266  | 291   | 317   |
| E (mm) | 31   | 35  | 46  | 55   | 64   | 81   | 93   | 107  | 121  | 144  | 161  | 173  | 189  | 208  | 224  | 234  | 252   | 271   |
| D (mm) | 17   | 19  | 25  | 29   | 35   | 43   | 52   | 60   | 68   | 80   | 91   | 100  | 108  | 114  | 121  | 129  | 136   | 143   |
| K (mm) | 11.5 | 13  | 17  | 21.4 | 25.5 | 31.5 | 37.5 | 43.5 | 49.5 | 57.5 | 65.5 | 72.5 | 78.5 | 85.5 | 91.5 | 96.5 | 104.5 | 111.5 |
| T (mm) | 10   | 10  | 12  | 15   | 20   | 22   | 30   | 35   | 40   | 45   | 55   | 70   | 70   | 70   | 70   | 80   | 85    | 85    |

## FORK

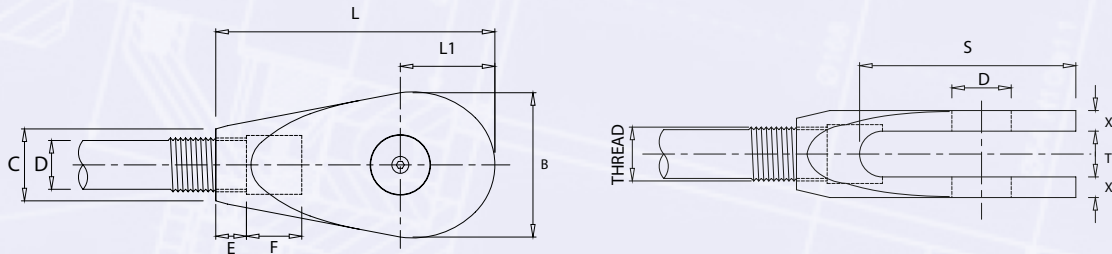


TABLE 10

| THREAD  | M10  | M12 | M16 | M20  | M24  | M30  | M36  | M42  | M48  | M56  | M64  | M70  | M76  | M80  | M85  | M90  | M95   | M100  | M105  | M110 | M120 |
|---------|------|-----|-----|------|------|------|------|------|------|------|------|------|------|------|------|------|-------|-------|-------|------|------|
| L (mm)  | 63   | 75  | 99  | 122  | 148  | 178  | 204  | 232  | 266  | 314  | 348  | 386  | 410  | 432  | 459  | 489  | 512   | 555   | 600   | 600  | 661  |
| B (mm)  | 30   | 34  | 45  | 53   | 64   | 81   | 93   | 109  | 123  | 147  | 169  | 181  | 201  | 212  | 236  | 248  | 262   | 289   | 294   | 296  | 350  |
| C (mm)  | 17   | 19  | 25  | 29   | 35   | 44   | 52   | 60   | 69   | 80   | 91   | 100  | 108  | 114  | 121  | 129  | 136   | 143   | 148   | 159  | 176  |
| E (mm)  | 12   | 14  | 18  | 24   | 27   | 32   | 38   | 44   | 50   | 58   | 66   | 72   | 78   | 82   | 87   | 92   | 97    | 102   | 107   | 112  | 122  |
| F (mm)  | 8    | 10  | 14  | 16   | 22   | 28   | 34   | 41   | 46   | 55   | 49   | 49   | 49   | 49   | 49   | 49   | 49    | 49    | 49    | 49   | 49   |
| T (mm)  | 11   | 12  | 15  | 19   | 24   | 26   | 34   | 39   | 44   | 49   | 59   | 75   | 76   | 78   | 78   | 86   | 91    | 91    | 96    | 106  | 125  |
| D (mm)  | 11.5 | 13  | 17  | 21.5 | 25.5 | 31.5 | 37.5 | 43.5 | 49.5 | 57.5 | 65.5 | 72.5 | 78.5 | 85.5 | 91.5 | 96.5 | 104.5 | 111.5 | 115.5 | 118  | 122  |
| S (mm)  | 46   | 54  | 70  | 85   | 104  | 127  | 148  | 167  | 191  | 227  | 259  | 276  | 309  | 325  | 349  | 374  | 396   | 407   | 430   | 455  | 516  |
| X (mm)  | 4    | 4.5 | 6   | 8.5  | 9.5  | 11.5 | 14.5 | 17.5 | 21   | 23.5 | 27.5 | 31   | 34.5 | 36   | 37   | 41   | 41    | 41    | 55    | 50   | 55   |
| L1 (mm) | 18   | 22  | 29  | 34   | 42   | 53   | 61   | 70   | 81   | 97   | 111  | 114  | 132  | 134  | 153  | 162  | 165   | 188   | 190   | 190  | 211  |



## TURNBUCKLE

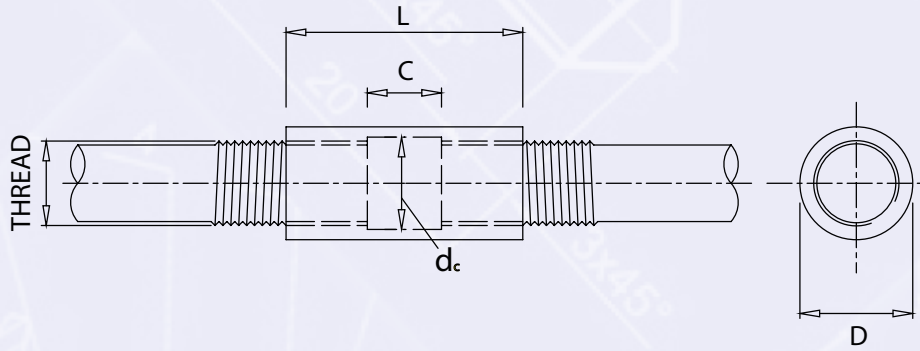


TABLE 13

| THREAD     | M10 | M12 | M16 | M20 | M24 | M30 | M36 | M42 | M48 | M56 | M64 | M70 | M76 | M80 | M85 | M90 | M95 | M100 | M105 | M110 | M120 |
|------------|-----|-----|-----|-----|-----|-----|-----|-----|-----|-----|-----|-----|-----|-----|-----|-----|-----|------|------|------|------|
| $d_c$ (mm) | 12  | 14  | 18  | 22  | 26  | 32  | 38  | 44  | 50  | 58  | 66  | 72  | 78  | 82  | 87  | 92  | 97  | 102  | 107  | 112  | 122  |
| C (mm)     | 50  | 50  | 50  | 50  | 50  | 100 | 100 | 100 | 100 | 100 | 100 | 100 | 100 | 100 | 100 | 100 | 100 | 100  | 100  | 100  | 100  |
| D (mm)     | 17  | 19  | 25  | 29  | 35  | 43  | 52  | 60  | 68  | 80  | 91  | 100 | 108 | 114 | 121 | 129 | 136 | 143  | 148  | 157  | 172  |
| L (mm)     | 74  | 78  | 86  | 90  | 98  | 160 | 172 | 184 | 196 | 212 | 228 | 240 | 252 | 260 | 270 | 280 | 290 | 300  | 310  | 320  | 340  |

## COUPLER

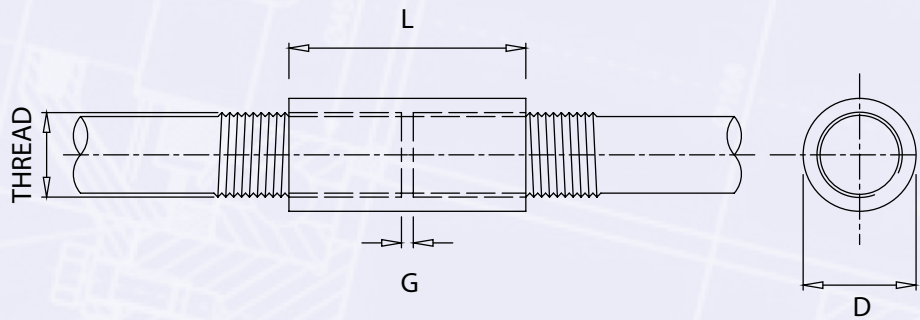


TABLE 14

| THREAD | M10               | M12 | M16 | M20 | M24 | M30 | M36 | M42 | M48 | M56 | M64 | M70 | M76 | M80 | M85 | M90 | M95 | M100 | M105 | M110 | M120 |
|--------|-------------------|-----|-----|-----|-----|-----|-----|-----|-----|-----|-----|-----|-----|-----|-----|-----|-----|------|------|------|------|
| D (mm) | 17                | 19  | 25  | 29  | 35  | 43  | 52  | 60  | 68  | 80  | 91  | 100 | 108 | 114 | 121 | 129 | 136 | 143  | 148  | 157  | 172  |
| G (mm) | $1 \leq G \leq 5$ |     |     |     |     |     |     |     |     |     |     |     |     |     |     |     |     |      |      |      |      |
| L (mm) | 25                | 29  | 37  | 45  | 53  | 65  | 77  | 89  | 101 | 117 | 133 | 145 | 157 | 165 | 175 | 185 | 195 | 205  | 215  | 225  | 245  |

## GUSSET PLATE

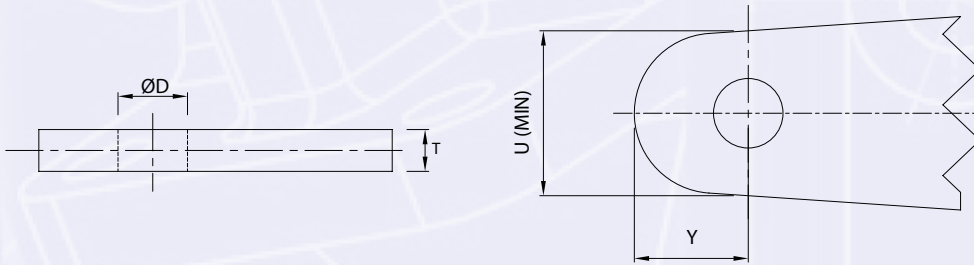


TABLE 15

| THREAD | M10  | M12 | M16 | M20  | M24  | M30  | M36  | M42  | M48  | M56  | M64  | M70  | M76  | M80  | M85  | M90  | M95   | M100  | M105  | M110 | M120 |
|--------|------|-----|-----|------|------|------|------|------|------|------|------|------|------|------|------|------|-------|-------|-------|------|------|
| T (mm) | 10   | 10  | 12  | 15   | 20   | 22   | 30   | 35   | 40   | 45   | 55   | 70   | 70   | 70   | 70   | 80   | 85    | 85    | 90    | 100  | 120  |
| D (mm) | 11.5 | 13  | 17  | 21.4 | 25.5 | 31.5 | 37.5 | 43.5 | 49.5 | 57.5 | 65.5 | 72.5 | 78.5 | 85.5 | 91.5 | 96.5 | 104.5 | 111.5 | 115.5 | 118  | 122  |
| U (mm) | 28   | 34  | 48  | 60   | 68   | 90   | 103  | 118  | 135  | 163  | 180  | 192  | 211  | 237  | 259  | 266  | 291   | 317   | 326   | 332  | 348  |
| Y (mm) | 19   | 22  | 30  | 37   | 43   | 56   | 64   | 74   | 84   | 101  | 112  | 120  | 132  | 148  | 160  | 166  | 181   | 196   | 202   | 206  | 215  |

If connecting to a stainless connection plate where no isolation is required, please use the above table.

## GUSSET PLATE WHEN USED WITH ISOLATION

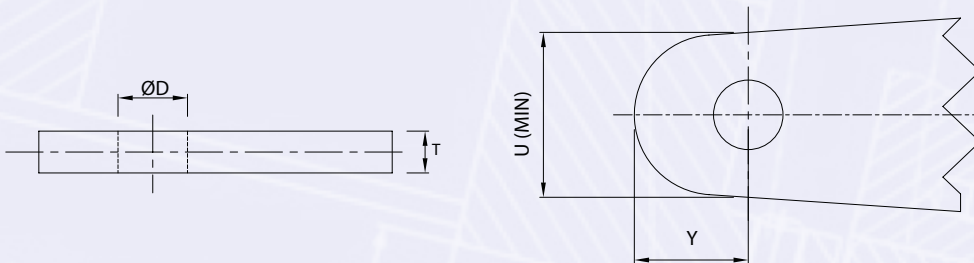


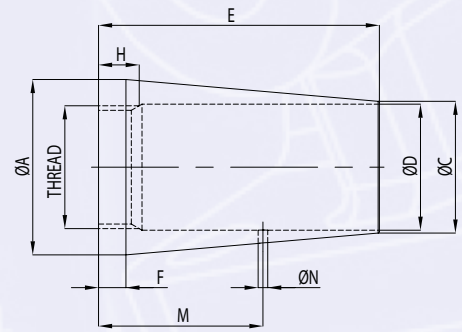
TABLE 16

| THREAD  | M10  | M12 | M16 | M20  | M24 | M30 | M36 | M42 | M48  | M56  | M64  | M70  | M76  | M80 | M85 | M90 | M95 | M100 | M105 | M110 | M120 |
|---------|------|-----|-----|------|-----|-----|-----|-----|------|------|------|------|------|-----|-----|-----|-----|------|------|------|------|
| T (mm)  | 10   | 10  | 12  | 15   | 20  | 22  | 30  | 35  | 40   | 45   | 55   | 70   | 70   | 70  | 70  | 80  | 85  | 85   | 90   | 100  | 120  |
| ØD (mm) | 15.5 | 17  | 21  | 25.5 | 30  | 36  | 42  | 48  | 55.5 | 63.5 | 72.5 | 79.5 | 85.5 | 93  | 99  | 104 | 112 | 119  | 123  | 126  | 130  |
| U (mm)  | 34   | 40  | 53  | 65   | 75  | 96  | 109 | 126 | 145  | 173  | 193  | 204  | 228  | 250 | 273 | 281 | 300 | 329  | 342  | 346  | 362  |
| Y (mm)  | 20   | 23  | 31  | 38   | 44  | 57  | 65  | 76  | 86   | 103  | 114  | 122  | 134  | 150 | 163 | 169 | 184 | 199  | 205  | 209  | 218  |

The above dimensions should be used when connecting stainless forks to a carbon steel connection plate. This then allows space for isolation sleeves and washers.

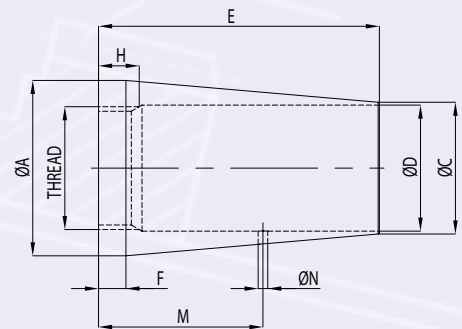
## UNIVERSAL LOCK COVERS

| REF    | THREAD     | ØA   | ØC  | ØD   | E   | F  | H  | M   | ØN |
|--------|------------|------|-----|------|-----|----|----|-----|----|
| LCU10  | M10 x 1.5  | 16.5 | 16  | 13.5 | 44  | 12 | 8  | 18  | 5  |
| LCU12  | M12 x 1.75 | 18.5 | 16  | 13.5 | 44  | 12 | 8  | 18  | 5  |
| LCU16  | M16 x 2    | 24   | 21  | 18   | 46  | 12 | 10 | 26  | 5  |
| LCU20  | M20 x 2.5  | 28   | 25  | 22   | 48  | 12 | 12 | 30  | 6  |
| LCU24  | M24 x 3    | 34   | 30  | 26   | 92  | 12 | 15 | 35  | 6  |
| LCU30  | M30 x 3.5  | 42   | 36  | 32   | 126 | 15 | 18 | 45  | 6  |
| LCU36  | M36 x 4    | 51   | 42  | 38   | 134 | 15 | 20 | 51  | 6  |
| LCU42  | M42 x 4.5  | 59   | 48  | 44   | 145 | 15 | 23 | 57  | 6  |
| LCU48  | M48 x 5    | 67   | 54  | 50   | 153 | 15 | 25 | 63  | 7  |
| LCU56  | M56 x 5.5  | 79   | 62  | 58   | 169 | 15 | 28 | 71  | 7  |
| LCU64  | M64 x 6    | 90   | 70  | 66   | 179 | 15 | 30 | 84  | 7  |
| LCU70  | M70 x 6    | 99   | 76  | 72   | 185 | 20 | 30 | 90  | 7  |
| LCU76  | M76 x 6    | 107  | 82  | 78   | 191 | 20 | 30 | 96  | 7  |
| LCU80  | M80 x 6    | 113  | 86  | 82   | 195 | 20 | 30 | 100 | 7  |
| LCU85  | M85 x 6    | 120  | 91  | 87   | 200 | 20 | 30 | 105 | 7  |
| LCU90  | M90 x 6    | 128  | 96  | 92   | 205 | 20 | 30 | 110 | 7  |
| LCU95  | M95 x 6    | 135  | 101 | 97   | 210 | 20 | 30 | 115 | 7  |
| LCU100 | M100 x 6   | 142  | 106 | 102  | 215 | 20 | 30 | 120 | 7  |
| LCU105 | M105 x 6   | 147  | 111 | 107  | 220 | 20 | 30 | 120 | 7  |
| LCU110 | M110 x 6   | 158  | 116 | 112  | 225 | 20 | 30 | 120 | 7  |
| LCU120 | M120 x 6   | 175  | 126 | 122  | 235 | 20 | 30 | 120 | 7  |



## CROSS COUPLER LOCK COVERS

| REF    | THREAD     | ØA   | ØC  | ØD   | E   | F  | H  | M   | ØN |
|--------|------------|------|-----|------|-----|----|----|-----|----|
| LCU10  | M10 x 1.5  | 18.5 | 16  | 13.5 | 29  | 12 | 8  | 16  | 5  |
| LCU12  | M12 x 1.75 | 24   | 16  | 13.5 | 31  | 12 | 8  | 18  | 5  |
| LCU16  | M16 x 2    | 28   | 21  | 18   | 37  | 12 | 10 | 26  | 6  |
| LCU20  | M20 x 2.5  | 34   | 25  | 22   | 43  | 12 | 12 | 30  | 6  |
| LCU24  | M24 x 3    | 42   | 30  | 26   | 74  | 12 | 15 | 35  | 6  |
| LCU30  | M30 x 3.5  | 51   | 36  | 32   | 105 | 15 | 18 | 45  | 6  |
| LCU36  | M36 x 4    | 61   | 42  | 38   | 111 | 15 | 20 | 51  | 6  |
| LCU42  | M42 x 4.5  | 71   | 48  | 44   | 117 | 15 | 23 | 57  | 6  |
| LCU48  | M48 x 5    | 81   | 54  | 50   | 123 | 15 | 25 | 63  | 7  |
| LCU56  | M56 x 5.5  | 95   | 62  | 58   | 136 | 15 | 28 | 71  | 7  |
| LCU64  | M64 x 6    | 109  | 70  | 66   | 144 | 15 | 30 | 84  | 7  |
| LCU70  | M70 x 6    | 119  | 76  | 72   | 150 | 20 | 30 | 90  | 7  |
| LCU76  | M76 x 6    | 133  | 82  | 78   | 156 | 20 | 30 | 96  | 7  |
| LCU80  | M80 x 6    | 139  | 86  | 82   | 160 | 20 | 30 | 100 | 7  |
| LCU85  | M85 x 6    | 147  | 91  | 87   | 165 | 20 | 30 | 105 | 7  |
| LCU90  | M90 x 6    | 157  | 96  | 92   | 170 | 20 | 30 | 110 | 7  |
| LCU95  | M95 x 6    | 164  | 101 | 97   | 175 | 20 | 30 | 115 | 7  |
| LCU100 | M100 x 6   | 171  | 106 | 102  | 180 | 20 | 30 | 120 | 7  |
| LCU105 | M105 x 6   | 183  | 111 | 107  | 185 | 20 | 30 | 120 | 7  |
| LCU110 | M110 x 6   | 189  | 116 | 112  | 190 | 20 | 30 | 120 | 7  |
| LCU120 | M120 x 6   | 207  | 126 | 122  | 195 | 20 | 30 | 130 | 7  |



For further information call +44 (0)1909 519200  
email [sales@macalloy.com](mailto:sales@macalloy.com) or visit [macalloy.com](http://macalloy.com)

Caxton Way, Dinnington, Sheffield, S25 3QE, U.K.